

2024 annual report to the Community

# Barmera Kindergarten

Barmera Kindergarten number: 6503

Partnership: Berri & Barmera



Preschool director:

Candice Clark

Date of endorsement:

17/02/2025



Government  
of South Australia  
Department for Education

# Context Statement

Information about Barmera Kindergarten is available on the centres website, as well as the Australian Children's Education and Care Quality Authority (ACECQA) website.

## Governing Council Report

By Renate Bagguley

The Barmera Kindergarten had another successful year in 2024 providing a welcoming, nurturing and inclusive environment for all children and their families.

The children participated in a busy year of play based learning to develop connection, resilience, growth, and development to prepare them for the next stage of their learning journey. For some children the next stage begun in term 3 as we navigated the 2024 implementation of mid-year intakes for reception-level students.

A positive focus throughout the year was developing ways and opportunities to connect and work collaboratively with families and our community. For family connection, at the beginning of the year a communication tool called Appessment was used to communicate with families to share learning experiences and reflections each week. A successful change to Clasdojo occurred to align with other schools in the community and encourage family involvement. For community connection Candice connected with local schools to strengthen ties and encourage a better continuation of learning and transitions for the children. This included visits to and from both Barmera and Cobdogla primary schools.

To ensure and maintain high level services at the centre, the teaching staff successfully participated in professional learning programs. This included Strategies for management of abuse related trauma training, National Quality Standards learning and a workshop program in Adelaide that was focused on preschool literacy by Orbis professional development. They completed their Preschool Literacy professional learning by successfully sharing their Applied Learning Project with other participants around South Australia.

Several successful fundraisers were held throughout the year, these included a bingo night, a pie drive, an Easter raffle and Christmas raffle.

A highlight of the year was our family day that was open to all in the community to attend at playspace. This was a very successful and enjoyable day for all and was attended well by our families, some local future Barmera kindergarten children and even a few from outside our district. The day was thoroughly enjoyed by the children who were entertained by the CFS with their water sprayer and Rachael Symens and the long line up of children waiting for their faces to be painted.

The year ended on a high note with a graduation ceremony for children starting school in 2025 followed by a Christmas concert for all children. With enormous pride the graduating children were presented with certificates and wore their graduation gown for photos following the concert.

We saw an emotional goodbye to Sally P and Julie at the end of 2024 and thank them for their many years at Barmera kindergarten and wish them well in their future endeavours.

I would like to thank Candice, Lauren, Julie, Angela, Katie, Sally P, Sally M, Tina and all relief staff for their efforts throughout 2024 and on a personal note, after 4 years being a "parent" at Barmera Kindergarten I will miss chatting with you all every week. Lastly, thank you to the committed Governing Council members who supported the Kindy and contributed to its continued success in 2024.

Chairperson

Renate Bagguley

## Preschool Attendance

	Term 1	Term 2	Term 3	Term 4
2021 centre	83.9%	78%	82.3%	85.6%
2022 centre	86.7%	78.3%	71.9%	59.8%
2023 centre	89.7%	74%	73.9%	84.1%
2024 centre	90%		74.6%	

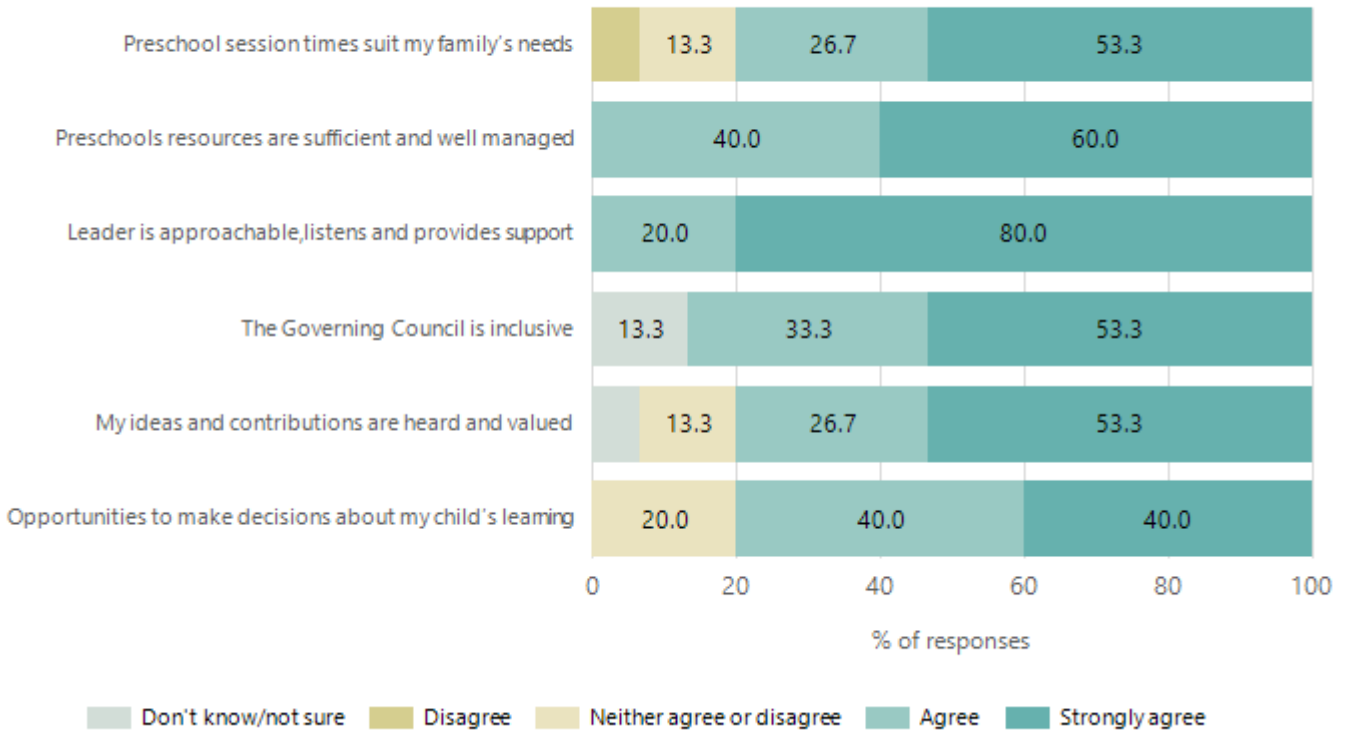
Based on attendances recorded in the two-week reference period each term. Data for eligible enrolments as described in the department's Enrolment policy. Attendance rates may differ to previous reporting with the transfer from calculations based on deemed attendance to actual attendance using booked hours divided by attended hours. Data Source: Department for Education Attendance Data, Semester 1 Report 2024. A blank cell indicates there were no students enrolled.

## Attendance Comment

In South Australia, preschool attendance is not compulsory, but it is strongly encouraged. Preschool gives children the best opportunity to develop skills, which prepare them for school. These benefits include establishing positive routines and habits, friendships and connections as well as developing communication, problem-solving and creative skills. All children are entitled to access a preschool program over 4 terms the year before they start school.

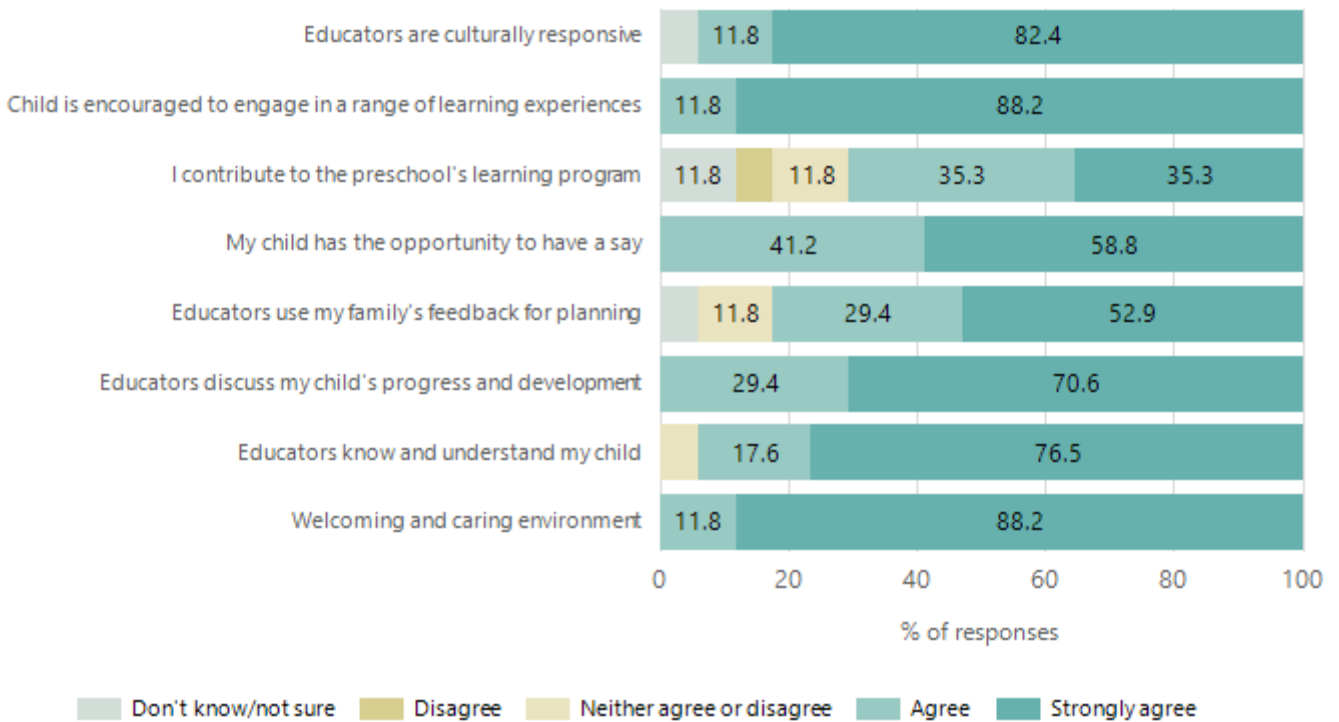
# Preschool Family Opinion Survey

## Governance, Leadership and Management



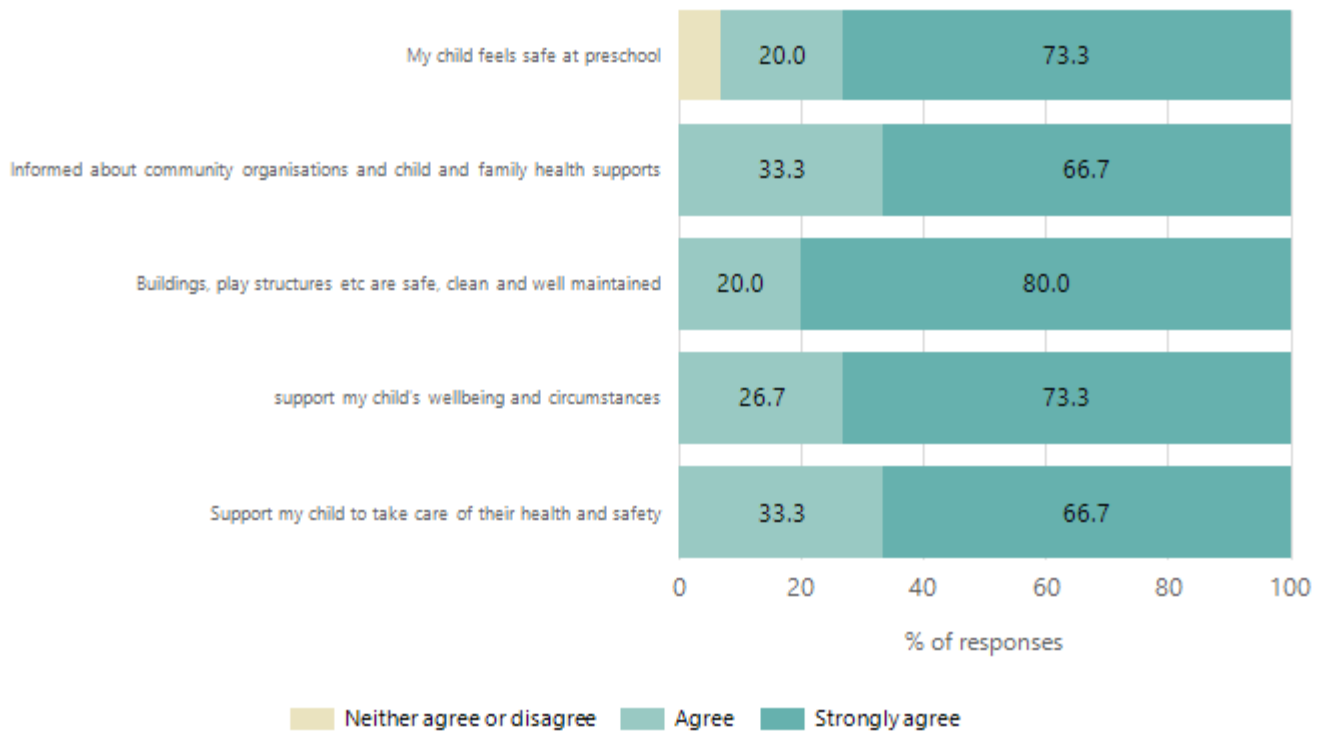
Data Source: 2024 Department for Education Preschool Family Opinions Survey, Term 3 2024.

## Quality of Teaching and Learning



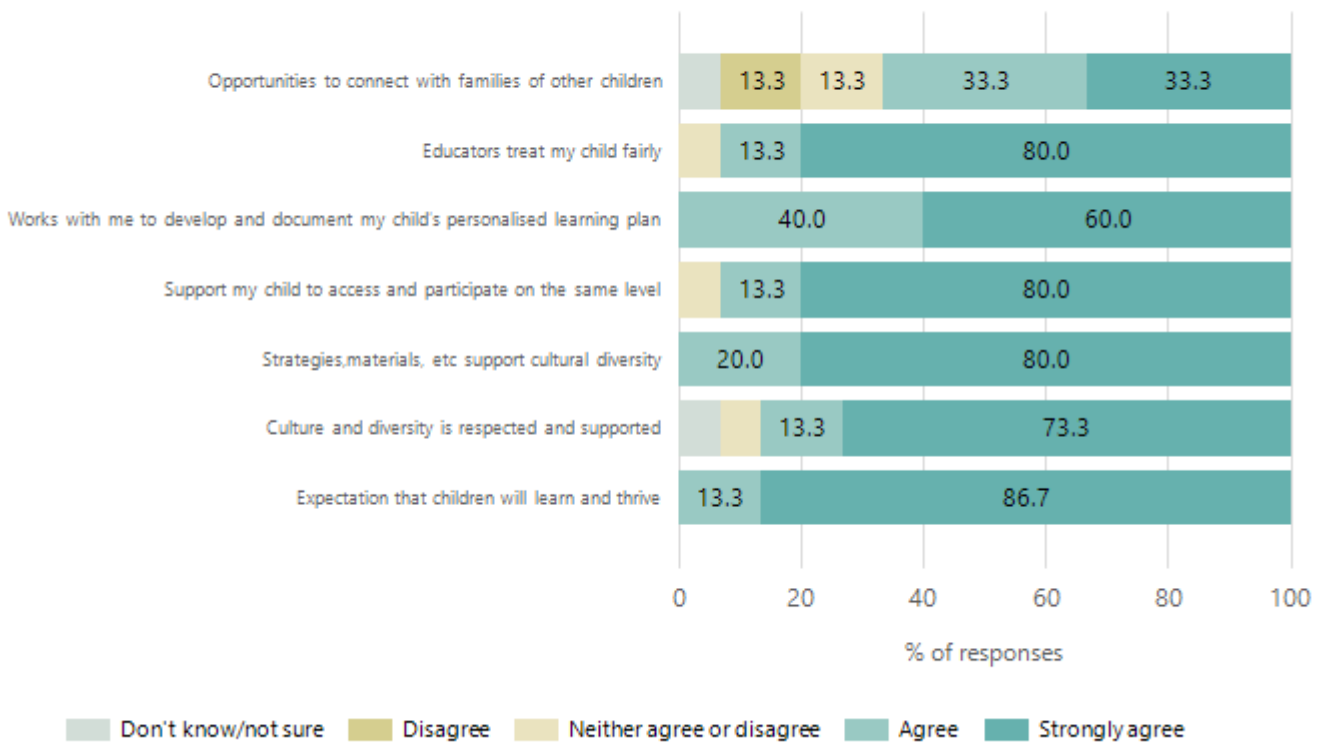
Data Source: 2024 Department for Education Preschool Family Opinions Survey, Term 3 2024.

## Safety, Health and Wellbeing



Data Source: 2024 Department for Education Preschool Family Opinions Survey, Term 3 2024.

## Support and Inclusion



Data Source: 2024 Department for Education Preschool Family Opinions Survey, Term 3 2024.

# Destination Schools

Feeder Schools (Site number - Name)	2022	2023	2024
0209 - Kingston-on-Murray Primary School		6.0%	<b>3.9%</b>
0506 - Barmera Primary School	21.6%	18.0%	<b>31.4%</b>
0721 - Cobdogla Primary School	16.2%	38.0%	<b>23.5%</b>
8323 - St Joseph's School - Barmera	10.8%	12.0%	<b>15.7%</b>
9999 - Unknown	40.5%	26.0%	<b>23.5%</b>

Note: The data is collected in term 3. It does not reflect actual schools enrolled in by existing preschool children. A blank cell indicates there was no data for students enrolled.

Data Source: Department for Education Destination Data Report, 2024.

School	2024
Barmera Primary School	32%
Cobdogla Primary School	28%
St Joseph's Primary School	32%
Riverland Special School	8%
Kingston-On-Murray Primary School	4%

## Highest Qualifications held by the teaching workforce and workforce composition

All teachers at this school are qualified and registered with the SA Teachers Registration Board.

Qualification Level	Number of Qualifications
Bachelor's degrees or Diplomas	2
Postgraduate Qualifications	1

Data Source: Data extracted from Mandatory Workforce Information Collections as on the last pay date of June 2024. As self-reported by staff in the system.

Please note: Data includes staff who are Actively employed and on extended paid leave. Please note only the highest qualification of the Teaching staff is reported. Excludes any number of other certifications earned.

### Workforce composition including indigenous staff

	Teaching Staff		Non-Teaching Staff	
	Indigenous	Non-Indigenous	Indigenous	Non-Indigenous
Full-Time Equivalents	0.0	2.6	0.5	2.5
Persons	0.0	3.0	1.0	3.0

Data Source: Data extracted from Mandatory Workforce Information Collection as on the last pay date of June 2024.

Please note: Data includes staff who are actively employed and on extended paid leave. "Indigenous category" is self-reported by staff in the system.

## Financial Statement

Funding Source	Amount
Grants: State	531,893.12
Grants: Commonwealth	-
Parent Contributions	12,403.79
Fund Raising	4,572
Other (O.C)	1,399.80

Data Source: School supplied data.